



• 2015 •
CONBOOK
SUBMISSION GUIDE

SPECIFICATIONS

INSPIRATION

SPECIFICATIONS

Illustrators

We're hunting for a delicious assortment of pretty things this year. A conbook is a souvenir and we'd like to make it the prettiest souvenir we can by using it as a platform to showcase and promote your work. Keep it PG 13 or below and we're keen. Any dino doodles and drawings you have will do! Just polish them until they shine and send them through! We've outlined some of the types of illustrations here and laid out a bunch of inspiration over the next few pages for those of you chasing a jump start!

Deep Etched

Cutouts such as the little procompsognathus here are fantastic. Graphics like these lack a background, and hence can be integrated into the conbook among the text. Guides for deep etching illustrations can be found for photoshop [HERE](#) and SAI [HERE](#). If you can't get either of these to work, send it through with a white background and we'll see what we can do to remove it ourselves.

Edges

Edge illustrations are similar, but cut off along a border. In the case of our roo in his Akubra here, the illustration cuts off at chest level, meaning we can drop him in down the bottom of one of the pages.

Authors

We're open to all types of work, from short stories to poetry. We do ask that you ensure the work is rated no higher than PG-13 and that it relate to our theme for the year. Please ensure short stories do not exceed 2000 words. You should also ensure you provide us with a title for your work as well as the author name under which you would like it to be published! Supply as RTF, ODT, DOC or DOCX.

Advertisers

If you'd like to have an advertisement featured in the conbook, please get in contact with the crew to see about organising a space. Up to date contact details are available at the furdu website. www.furdu.com

Frames

These are the more traditional style of illustration, and tend to include developed backgrounds as well as subjects. These three are a half page and two quarter pages, however you can build to other sizes if you like and we'll find them a cosy home somewhere in the book.

PRINT SPECS

Please provide all work in **RGB** colour so we can convert to CMYK as necessary.

Please supply standard frame images in **JPG** format.

Please supply deep etched and edge images with transparencies in **PNG** or **TIFF** formats (png preferred). If you don't know how to do this and can't follow the guides linked in the deep etch section on the left of this page, supply your work as a jpg with a white background and we'll see what we can do!

Please ensure that all work is print resolution at **300DPI**. Here are some examples of sizes to give you an idea of the types of resolutions you should work at.

Full page: 2480px wide x 3508px high
1/2 page: 2480px wide by 1654px high
1/4 page: 1240px wide by 1654px high

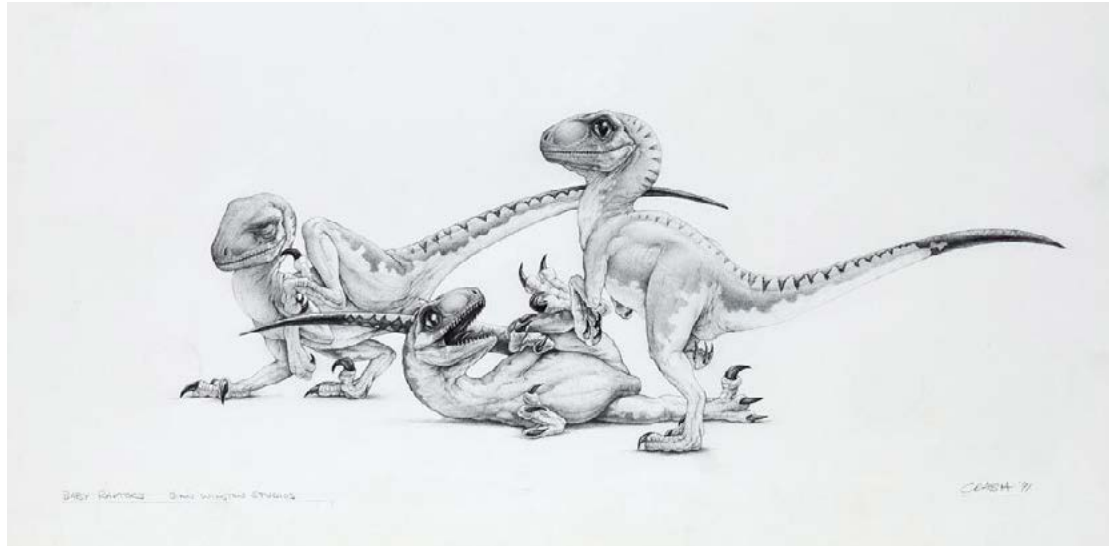
SUBMISSION DEADLINE: February 10th, 2015!



To Inspiration!

Jurassic Park

Jurassic Park Concept Art
created for Stan Winston Studio
by Mark (Crash) McCreery



Concept Art

JURASSIC PARK 'BEHIND THE SCENES' videos
by Stan Winston School

 Jurassic Park Behind the Scenes
<http://youtu.be/TEXpKda61dg?list=PLw3FQmoG4RtGfxyIvr5jGC7aa4mHhEwjF>

Books and Films

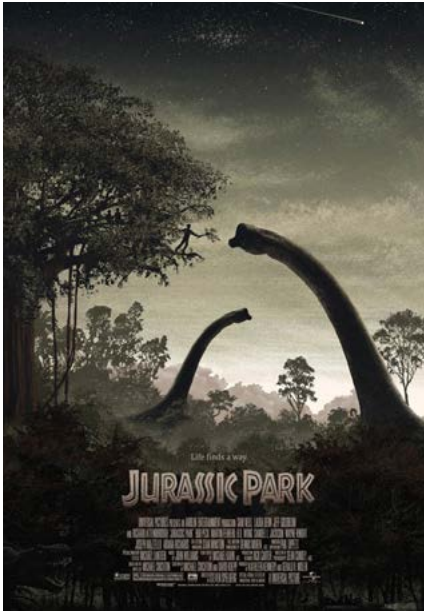
Jurassic Park and The Lost World by Michael Crichton, as well as the the films themselves are an obvious port of call if you're looking for ideas. If you're feeling especially brave you could even attempt to watch JPIII.



Production Design

These are movie poster concepts by John Alvin and an assortment of fan made posters that followed the films. There's a lot of production design behind the franchise and a lot of cool fanart to pore over.

 Unseen Jurassic Park Posters
<http://www.buzzfeed.com/danieldalton/welcome-to-jurassic-park#39hc1tq>

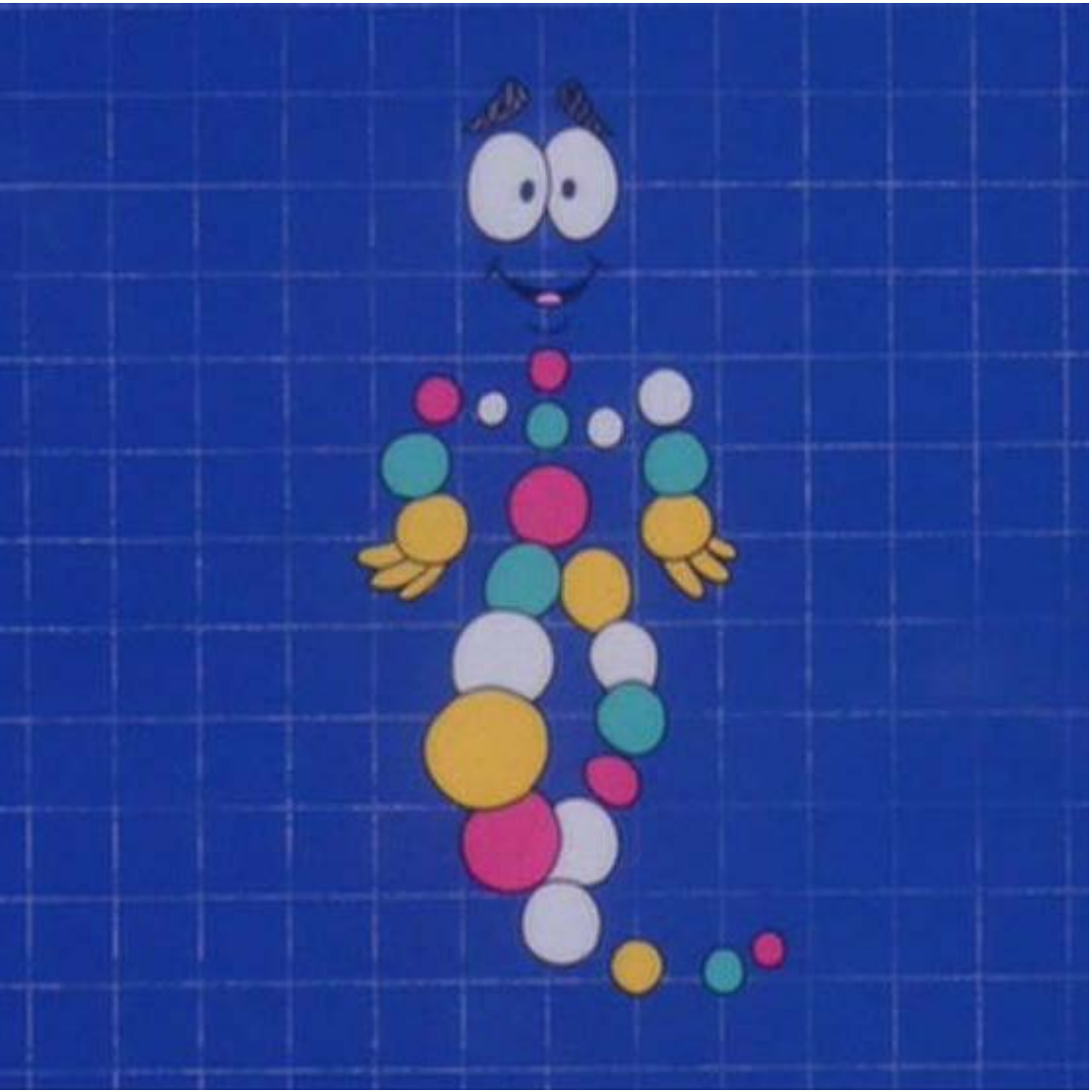


Jurassic Park

Canon

It could be fun to play around with the aesthetics and characters of the film.
The Wikia is an exhaustive database of all things Jurassic Park.

jurassicpark.wikia.com/

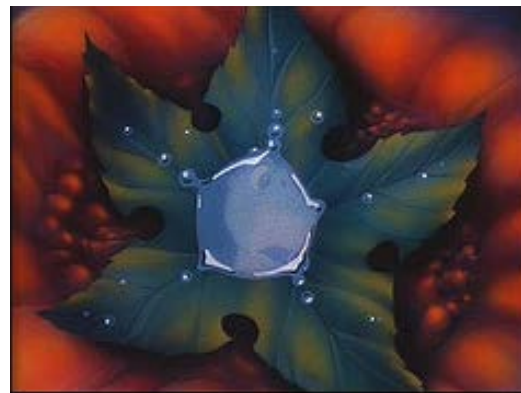
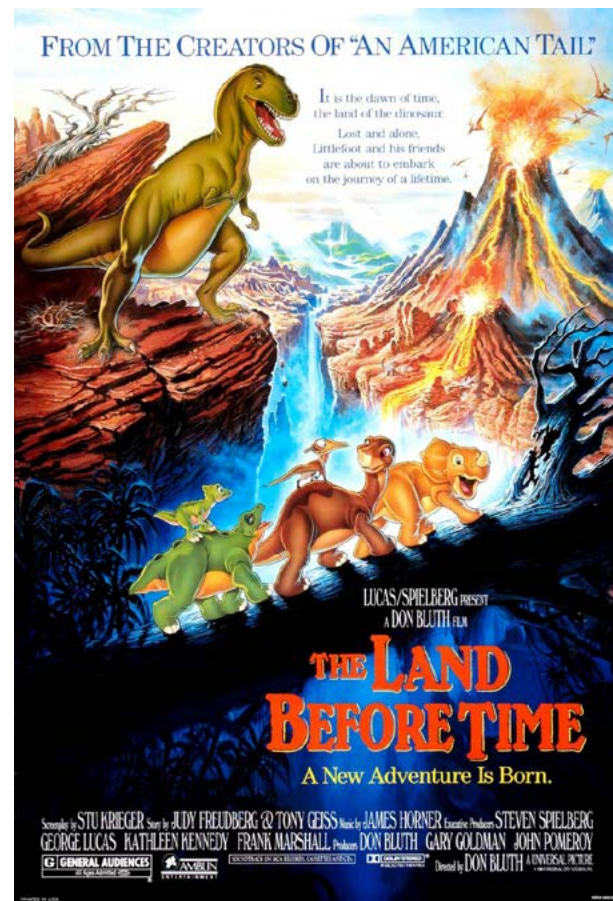


The Land Before Time

The Land Before Time

The 1988 animated adventure directed by Don Bluth, following Apatosaurus Littlefoot and his friends on their journey to the Great Valley. A bittersweet nostalgia trip and a half that spawned somewhere between 10 and 10^{10} sequels.

▶ If We Hold On Together with Diana Ross
<http://youtu.be/ObPneATgAss>



We're Back!

The 1993 Spielberg film based on a 1987 book of the same name, narrated from the perspective of Rex, a T-Rex sent from the prehistoric era to the future to confuse anyone with a sense of logic and delight anyone under the age of ten. Even now its still pretty delightful. Jay Leno played the alien too! I didn't know that.



Dinosaur

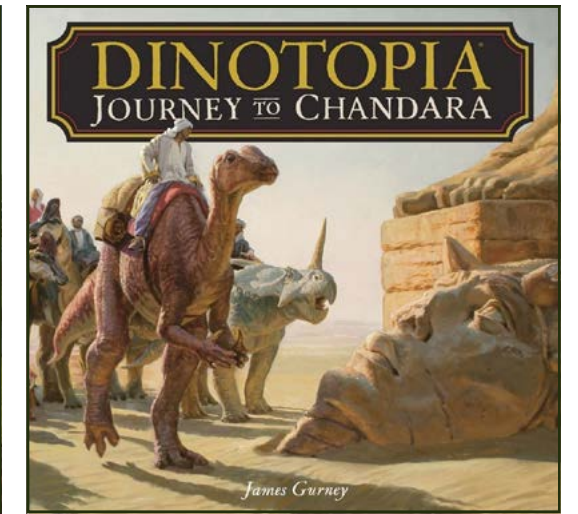
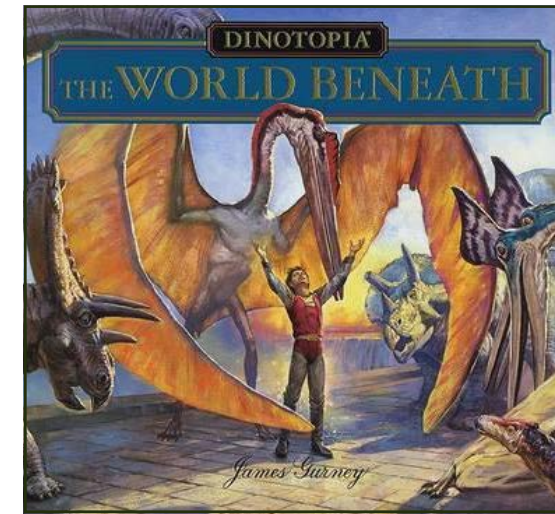
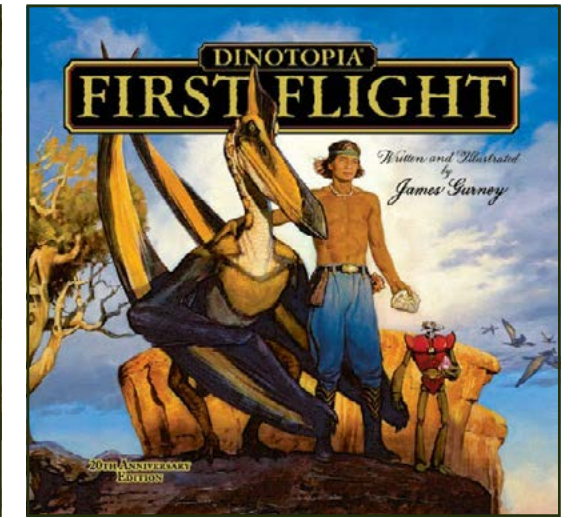
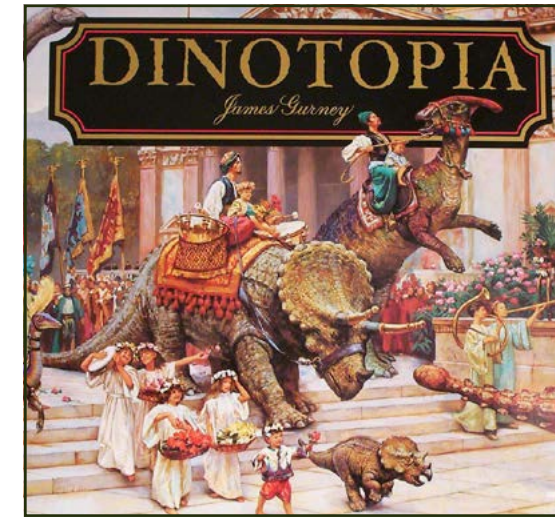
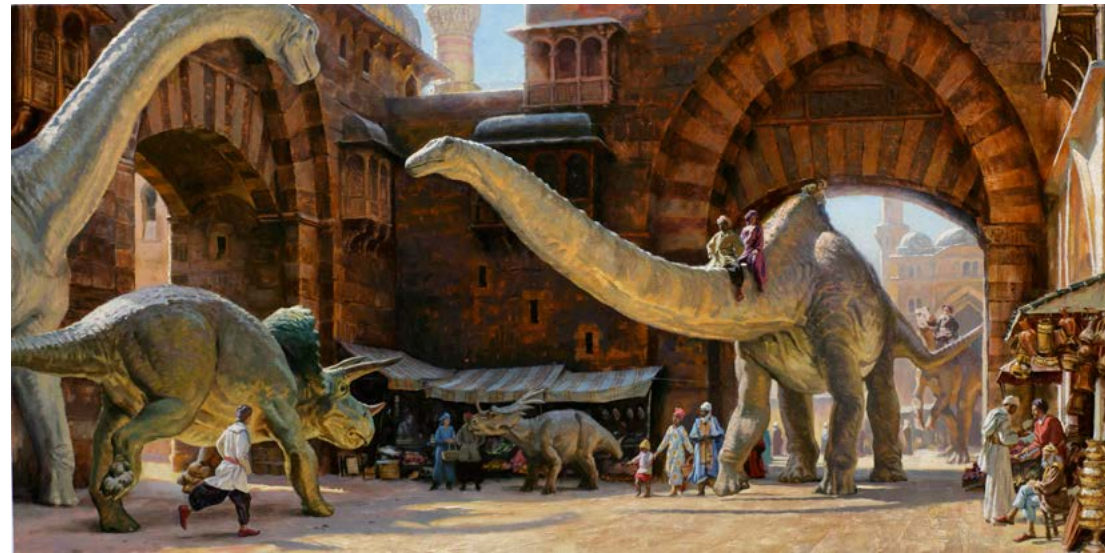
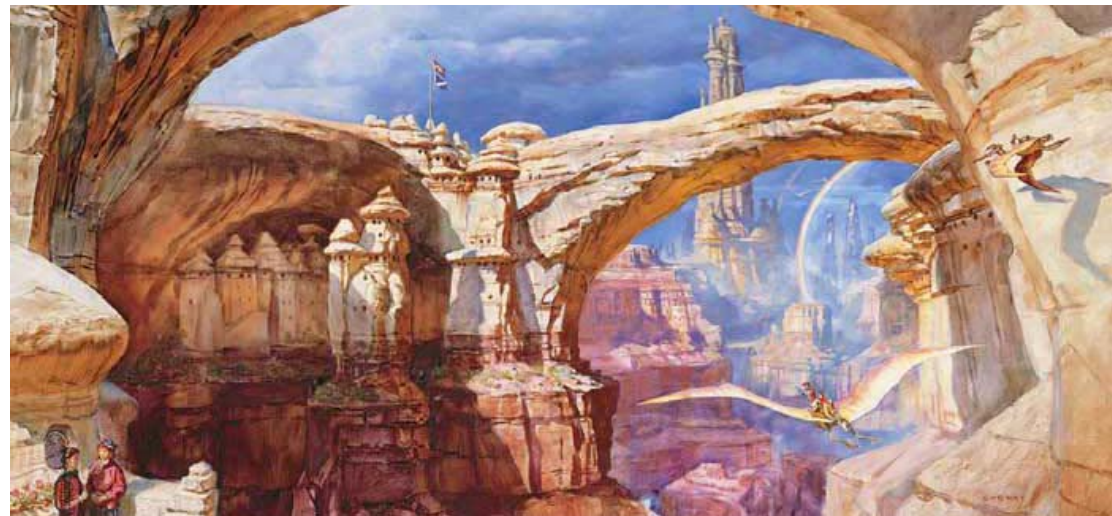
This 2000 Disney film follows the Iguanodon Aladar, raised by a family of Smilodectes, he outruns the Chicxulub meteorite and attempts to matriculate into a herd. A story we can all relate to. Smilodectes aren't technically lemurs but both fall within the same suborder. So tangentially if a lemur were to accidentally slip into one of your illustrations, I wouldn't turn it away. *awkwardly obvious winking*



Paleoart

James Gurney

Master of plein air and paleoart as well as the author of Dinotopia.



Paleoart

Julius T. Csotonyi

Canadian paleoartist and natural history Illustrator.



Paleoart

William Stout

American Fantasy artist and illustrator with a specialisation in paleoart.





SO WHAT ARE YOU WAITING FOR?

Send your creative works to furrydownunder@gmail.com
including "conbook submission" somewhere in the title!